

---

---

# BSTTW COMMUNITY NEWS

Volume 9 Issue 4

October 2009

---

## BSTTW REBUILDING LIVES

### Tai Chi Pham Charged With Prohibition

By: Michael Appleman, CEO

**B**ack in 2002 Tai Chi Pham who claimed to be a stock broker spoke with the **BSTTW board of directors** about financing **BSTTW's** money in the stock market with Interactive Brokers. The **BSTTW board of directors** had to make a hard decision since before Mr. Pham left by boat in 1980 with his family, Mr. Tai Chi Pham was studying to become a Catholic Priest. The **BSTTW board of directors** felt that Mr. Pham would be a trustworthy individual. Then the **BSTTW board of directors** was informed that once in the United States Mr. Pham met and fell in love with Elizabeth (Vy) Nguyen, who is one of many cousins to the late Catholic Bishop Peter Nguyen Van Nho from Nha Trang, Viet Nam. Mr. Pham married Ms. Nguyen and the two of them have had two children. Again this became a hard decision for the **BSTTW board of director** due to the fact that the board believed that Mr. Pham must have strongly believed in God our Father and was an honest and trustworthy individual or the Catholic community in Viet Nam would not have accepted him into the Priest program.

Michael Appleman and the other board of directors discussed the pros and cons of investing **BSTTW's** funds with Mr. Pham. After a great deal of thought they

decided that it would not be in **BSTTW's** best interested to not allow Tai Chi Pham to have access to **BSTTW's** funds. They felt that since Bishop Peter Nguyen Van Nho had passed away in May 2003 it would be very difficult to get his overview of Mr. Pham. During the next few years Mr. Pham asked **BSTTW** about financing their funds. The **BSTTW board of directors** would not change their minds.

In 2009 **BSTTW** found out that the State of Illinois Secretary of State Security Department charged Tai Chi Pham with Prohibition. On July 17, 2009 Mr. Pham was charged with a Temporary Order of Prohibition. There are two counts in the order. Count 1 is Fraud In The Sale of Securities and Count 2 is Unregistered Dealers/Salesperson/Investment Adviser or Investment Adviser



### A FAMILY AROUND THE WORLD



CONTINUED On Page 2 "PROHIBITION"

---

---

## Inside This Issue

- 1 BSTTW is Looking for a Board of Director
  - 2 Cutting Your Lawn and Thermal Burns
  - 3 The Supra Scanner Can Save Burn Victims
  - 4 Eyebrow Hair Simulation
  - 5 Poem: Children Are Our Future
-

**CONTINUED From Page 1 “PROHIBITION”**  
 Representative. Mr. Pham was given thirty days to respond to the charges. Mr. Pham and a representative for Mr. Pham never responded. Then on August 20, 2009 Tai Chi Pham was charged with the final Order of Prohibition. Counts 1 and 2 are exactly the same. Mr. Pham was given thirty-five days to respond to the charges. Again Mr. Pham never responded. The Order of Prohibition was finalized by the State of Illinois and the charges are permanent.

The current **BSTTW board of directors** are relieved that **BSTTW** did allow Mr. Tai Chi Pham to have contact with **BSTTW's** money while Mr. Pham was living in Glencoe, Illinois, Winnetka, Illinois, and Bellevue, Washington.

To see the Temporary charges against Mr. Tai Chi Pham go to:

[http://www.cyberdriveillinois.com/departments/securities/administrative\\_actions/2009/july/taipham\\_top.pdf](http://www.cyberdriveillinois.com/departments/securities/administrative_actions/2009/july/taipham_top.pdf)

You can also find a copy of the Temporary Order of Prohibition against Tai Chi Pham by the State of Illinois Secretary of State Security Department at

<http://www.burnsurvivorsttw.org/taipham/taiphamtempprohibition.pdf>

And to see the Final Charges against Mr. Tai Chi Pham go to:

[http://www.cyberdriveillinois.com/departments/securities/administrative\\_actions/2009/august/taipham\\_op.pdf](http://www.cyberdriveillinois.com/departments/securities/administrative_actions/2009/august/taipham_op.pdf)

You can also find a copy of the Final Order of Prohibition against Tai Chi Pham by the State of Illinois Secretary of State Security Department at

<http://www.burnsurvivorsttw.org/taipham/taiphamfinalprohibition.pdf>

If you feel that Mr. Tai Chi Pham might have illegally invested your money contact Mary A. Lopez at the Illinois Secretary of State

## **BSTTW COMMUNITY NEWS**

Securities Department in Chicago, Illinois. The contact phone number is 312-793-3023.

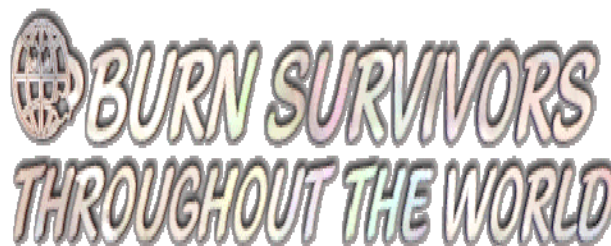
### **BSTTW Is Looking For A Board of Directors Member**

By: Michael Appleman, CEO

There is an opening in the **BSTTW Board of Directors**. We are looking for an individual who meet the following qualifications:

1. Previous experience with Non Profit Organizations
2. Fund Raising Background
3. Leadership Roles
4. Research activities
5. Educational Background
6. Publications
7. Does not have to be a burn survivor or family member
8. Have contacts that can benefit BSTTW
9. Be available for regular and emergency meetings
10. Have the availability to the internet in order to attend the board meetings, receive and respond to emails and do research

The **BSTTW board of directors meetings** are held in a private **BSTTW** internet chat room. All board members have a say so in the decision making process. We feel that each one of us has a specialty and opinions. Once we put the information together that is gathered in the discussions by the board of directors we can vote and generate the best decision for **BSTTW** and the **Burn Survivor Community**. The board of director will be given his/her personal **BSTTW email account**. If you are interested in applying for a position on the **BSTTW board of directors** you will need to fill out and electronically submit the **BSTTW Volunteer E-Form**, which can be found at



**CONTINUED On Page 3 “BSTTW DIRECTOR”**

**CONTINUED From Page 2 “BSTTW DIRECTOR”**  
[www.burnsurvivorsttw.org/volunteer/volunteer.html](http://www.burnsurvivorsttw.org/volunteer/volunteer.html). You must also be a **BSTTW Member**. In order to become a **BSTTW Member** you will need to fill out and submit the **BSTTW Membership E-Form** at [www.burnsurvivorsttw.org/membership/memform.html](http://www.burnsurvivorsttw.org/membership/memform.html). If you are already a registered **BSTTW Volunteer** and **BSTTW Member** then you can contact me directly at [michael@burnsurvivorsttw.org](mailto:michael@burnsurvivorsttw.org).

## Cutting Your Lawn and Thermal Burns

Michael Appleman

By:

When cutting your lawn you must take care when fueling your equipment in order to help prevent a burn injury.

More than one individual or lawn mower professional have found suffered a burn injury. There have been times when an individual who has a small percentage of lawn remaining and you run out of fuel. You want to finish the job and move on. So you grab the gas can and quickly fill the tank in the lawn mower. The gas sloshed out of the container and the fuel falls all over the hot parts of the lawnmower. Before you know it the gas caught on fire and the individual suffers a major burn injury and is rushed to the hospital.

The reason why this happened is because the individual was in a rush, he/she was not careful and the gas got on the hot areas of the lawnmower. The individual should have taken a few minute brake and allowed the engine to cool down before adding the fuel. This would have helped to prevent the fire and the burn injury. When filling the gas tank in your lawn mower you should also use a funnel in order to help prevent spilling gas onto the engine.

Reduce Your Risk of a Thermal Burn By Using the Following Tip:

1. If you have to clean out a clogged area in your lawn mower, you should first turn off the engine and allow the engine to cool down. It is important that you wear

## BSTTW COMMUNITY NEWS

- gloves and use a stick. Do not use bare hands.
2. Do not remove a radiator cap when the engine is warm. Allow the engine to cool down.
  3. Use proper guards and shields to keep your body away from hot equipment.
  4. Always store your fuel in an approved container. Check the container periodically to make sure it is clean and in good condition.
  5. Disconnect the spark plug before you work on the engine. This will prevent the engine from turning on.
  6. Avoid wearing loose-fitting clothes when cutting your lawn. This can help to prevent your clothes from touching the hot surfaces and catching on fire. Also change your clothes if fuel gets on them.

By being careful you can prevent a thermal burn injury and becoming a burn survivor or worse dying.



## The Supra Scanner Can Save Burn Victims' Pain and Lives

### Saving Burn Victim's Pain and Lives

*NASA's air and spacecraft flaw-detecting technology now saving the lives and suffering of burn victims.*



Each year about two million Americans suffer serious burns. A large

number of them require hospital treatment and 10,000-12,000 die from their injuries. Among those hospitalized, some 70,000 people require intensive care, and the cost of such treatment runs several 100 million dollars a year. The application of NASA ultrasound technology, originally developed to detect microscopic flaws in aircraft and spacecraft materials, has provided an advanced diagnostic instrument that makes it possible to immediately assess burn damage-knowledge that permits improved patient treatment and may even save lives in serious burn cases. The Supra Scanner is the first clinically tested, commercially available product of its kind. It also helps diagnose other skin conditions and disorders, including cancer.

### DIAGNOSIS

The depth of a burn is the critical factor in the diagnosis and treatment of second and third degree burns. The most common treatment is to allow the natural sloughing of burn-caused dead tissue, and then to close the resulting wounds with skin grafts. Effective treatment, therefore, depends upon early recognition of the extent of dead tissue and its removal, by chemical or surgical means, to minimize risk of infection and speed healing. The key is accurate information about the depth of the burn. Previous methods to assess bulk depth were subjective and, thus, prone to error.

### THE SUPRA SCANNER

## BSTTW COMMUNITY NEWS

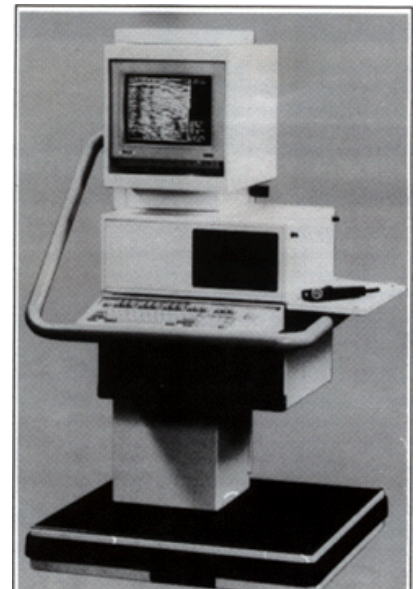
To meet the need for precise determination of burn depth, a prototype instrument was developed capable of determining the level where burned tissue ends and healthy tissue begins. This is possible because, when skin is burned, a protein (collagen) that makes up approximately 40 percent of skin becomes more dense. The technique behind the Supra Scanner involves directing ultrasonic waves at the burned area. The difference in density between damaged and healthy tissue causes sound waves to reflect at the point of interface.

### HOW IT WORKS

The Supra Scanner was granted Food and Drug Administration approval in December 1990. The instrument uses the NASA depth measurement technology by combining a scanning transducer and computer in a single instrument that may be used at a patient's bedside. The patented system produces high resolution color images of human tissue, generates cross-sectional images of the skin and provides information regarding skin surface and subsurface features.

### FEATURES

The Supra Scanner contains several exclusive technical features such as activation by voice, a display range of 256 colors, and the NASA depth measurement technology. The standard ability of the Scanner is to "see" up to 37 millimeters (1.48 inches) beneath the surface of the skin. With an upgrade, this ability increases 60 millimeters (2.4 inches).



**CONTINUED On Page 5 "SCANNER"**



**CONTINUED From Page 4 "SCANNER"**

### **SIMPLE TO USE**

In operation, the transducer is placed on the ailing or injured skin area. The scan obtained is transferred to the monitor screen where it is read by doctors or medical technicians. The instrument then prints a copy of the scan for documentation and referral purposes.

### **APPLICABILITY**

The Supra Scanner has additional applicability in diagnosis of skin cancer and other skin disorders, plastic surgery and diagnosis of lymphatic disorders.

### **TECHNOLOGY TRANSFER PROCESS**

This new health care product is the result of Langley's Technology Utilization (TU) Program. In 1983, Langley initiated an applications engineering project through its TU Program that would meet the need to determine burn depths. This process used NASA expertise to redesign and re-engineer existing technology that detected flaws in air and space craft materials.

### **RESEARCHERS**

The Langley project was spearheaded by Dr. John H. Cantrell and Dr. William P. Yost, both physicists in Langley's Nondestructive Measurement Science Branch, which conducts research on ultrasonic and other techniques for evaluating quality and fatigue of aerospace materials. Other organizations cooperating on the project include Medical College of Virginia (MCV), Richmond, Va.; the University of Aberdeen, Scotland; and the NASA Technology Applications Team, Research Triangle Institute (RTI), North Carolina, which coordinated the project and directed the commercialization of the technology.

The benefits to mankind from aerospace technology are becoming more and more commonplace - thanks to scientists involved in NASA research programs and private companies that transfer aeronautics and space technology into products and services for everyday living.

## **BSTTW COMMUNITY NEWS**

### **BENEFITS**

- PREDICTS WOUND HEALING
- MEASURES BURN DEPTH
- CORRELATES TISSUE STRUCTURE
- MONITORS HEALING PROCESS
- MEASURES: SKIN THICKNESS, WOUNDS, BURNS, PRE-CANCEROUS LESIONS, CANCEROUS CELLS, PATHOLOGICAL SKIN CONDITIONS

The Supra Scanner presently has three models:

- A cart-mounted unit for hospitals and clinics
- A lap-top size for doctor's offices, nursing homes, and home care facilities
- A desk-top model to be carried in a shoulder bag for emergency and home use

One of the Congressionally mandated responsibilities of NASA is to promote economic and productivity benefits to the Nation by encouraging the transfer of aerospace-generated technology to the public domain. NASA meets this objective through its Technology Utilization Program, which provides the link between the developers of aerospace technology and those either in the public or private sectors who might be able to productively employ the technology.

A Technology Utilization applications engineering project is considered successful when the technology developed under the project is used or is manufactured for the market. The Supra Scanner is one of these successes.

To find out more you can go to  
<http://www.nasa.gov/centers/langley/news/factsheets/Burn.html>



## Eyebrow Hair Simulation

By: Susan Church

There are many different ways to have your eyebrows applied.

- **Powery: Solid, filled in eyebrows in either a soft or darker colour.**
- **Hair Strokes: With a darker colour over a very soft base colour.**
- **Bold Hair Strokes: Either light or dark without a base colour.**
- **Medium Hair Strokes: Either light or dark, with or without a base colour.**

Your eyebrows are the frame of your face. If you have sparse hair, asymmetrical features, physical disabilities, play sports, have a visual impairment, or just want to look your best all day and night, then Eyebrow Hair Simulation is for you.

It actually takes longer to draw your eyebrows on, check for symmetry, measure and measure again to create the perfect eyebrow for your shape of face. The actual procedure can be completed within an hour, again taking into consideration the time to draw the eyebrows on.

My favorite saying that I tell every student is: "Eyebrows are not twins; they should be like sisters but definitely not like distant cousins." In other words, each side of the face is different due to the skull, the fat of the individual, curvature of the brow bones and the projection of the orbital ridge. The brows should be as symmetrical as possible, be soft in colour, compliment and frame your face.

The benefits are that you will look great all day and night. Whether playing sports, working, being outdoors or just for your everyday look. You can still pencil over your eyebrows for a formal evening event, or a more dramatic appearance.

During the first few days following your initial application, your eyebrows will be darker and have a slight crusting to them. This is the blood, pigment and lymph at the surface of the epidermis. Apply Petroleum with a cotton swab

## BSTTW COMMUNITY NEWS

very sparingly 2-3 times a day. Putting too much of any healing product will keep the eyebrow too moist and they will take longer to heal. After they slough off, normally within 3-7 days depending on how your body heals, you will have a softer looking colour. Your colour will appear different throughout the complete healing process, which takes about 4 weeks. We will schedule a follow up colour refresher in 4-8 weeks to fine tune the colour and symmetry. Following your 'After Care' instructions is imperative to successful results.

The cost of Eyebrow Hair Simulation average fees start at \$395.00. to \$1,500.00. For clients with Alopecia, or very little hair, the fees could go up to \$1,500.00+ but the average cost is around \$595.00.

How long your procedure lasts will depend on how you take care of your procedure immediately following the initial application and following any colour refreshers. Using glycolic acids, or any other AHA's in your skin care products, will lighten your procedure area. Depending on your general health, medications and skin care regime, you can expect your eyebrow procedure to last for years. However, we strongly suggest a colour refresher as needed. You will also need to apply a total sun block on your face daily to keep your procedure colour protected and reduce colour fading.



Proud participant in the  
Combined Federal Campaign

**BSTTW COMMUNITY NEWS**  
**Burned Children Need Our  
Help**

**Donate to the  
BSTTW Bishop Peter Nguyen  
Van Nho World Wide Burned  
Children's Fund**

**At**  
[http://www.burnsurvivorsttw.org/  
donations/donationschild.html](http://www.burnsurvivorsttw.org/donations/donationschild.html)



### BSTTW POEMS

I began writing poems during my recovery in order to not only help himself, but to offer support and positive thoughts to all burn survivors and family member who are going through a rough time. I ask you all to never give up and continue to do what I and so many others have done during and after recovery...find the support needed to work through the rough time and continue moving forward in your life.

If you would like to submit a poem or story to **BSTTW** you can do so by email at [poems@burnsurvivorsttw.org](mailto:poems@burnsurvivorsttw.org) or [stories@burnsurvivorsttw.org](mailto:stories@burnsurvivorsttw.org). **BSTTW** also has a program on our internet site that allows you to submit your stories and poems electronically. You can submit the full story at [www.burnsurvivorsttw.org/stories/storymaker.html](http://www.burnsurvivorsttw.org/stories/storymaker.html) and your full poem at [www.burnsurvivorsttw.org/poems/poemmaker.html](http://www.burnsurvivorsttw.org/poems/poemmaker.html)

*Michael Appleman, CEO*

### Children Are Our Future

By: Michael Appleman

Children learn their about life from us  
Teaching them correctly is a must

Love is important to help them grow  
Later they will use the teaching they know

A burn injury is an unexpected fall  
The kids can recover from the damaged call

With the doctors, medications, support, rehab and  
**BSTTW** teams  
We will help the children recover while they scream

This process can continue for weeks, months or  
years  
That is why the children and their family have so  
many fears

The family members need one on one support to  
maintain  
The **BSTTW Support Team** is available to offer what  
is needed to sustain

The public is part of the children's recovery plan  
So without hesitation do what is needed man

For **BSTTW** to fund the burn units needs  
Donations are required to plant the important seeds.

God will thank you for what your funds did  
It offered recovery of the burned kid

*Michael Appleman*

You can contact **BSTTW Support Team** by using  
our internet site at  
<http://www.burnsurvivorsttw.org/eforms/supportemail.html> or by telephone 936-647-2256 or toll free  
at 866-712-6164



## BSTTW CONTACT INFORMATION

### EMERGENCY CONTACTS

**BSTTW** has a support team that is on call 24 hours a day 7 days a week to help a burn survivor, family member or firefighter deal with a burn injury and fire related emergency. You can contact **BSTTW** on the internet or by telephone. On the internet go to the **BSTTW Emergency Email E-Form** at [www.burnsurvivorsttw.org/eforms/emergemail.html](http://www.burnsurvivorsttw.org/eforms/emergemail.html) or the **BSTTW Support Team E-Form** at [www.burnsurvivorsttw.org/eforms/supportemail.html](http://www.burnsurvivorsttw.org/eforms/supportemail.html)

To contact **BSTTW** by telephone by dialing 936-647-2256 or toll free at 866-712-6164. If we are not in the office or it is after hours, you can leave us an emergency message in our voice box 44 and a support team member will respond to you within 24 hours.

#### **BSTTW Directors**

Michael Appleman: **Executive Director**  
[michael@burnsurvivorsttw.org](mailto:michael@burnsurvivorsttw.org)

Nguyễn Thi Diêu Trân: **Director- Việt Nam**  
[tran@burnsurvivorsttw.org](mailto:tran@burnsurvivorsttw.org)

Ariel Gonzalez: **Director- Mexico**  
[ariel@burnsurvivorsttw.org](mailto:ariel@burnsurvivorsttw.org)

Julie Olinger: **Assistant Director – Colorado**  
[julie@burnsurvivorsttw.org](mailto:julie@burnsurvivorsttw.org)

#### **DONATIONS**

As a 501 (c)(3) Non Profit Organization, **BSTTW** depends on donations from corporations, organizations, families and individuals. All donations, big or small are tax deductible to the extent allowed by the United States government tax laws. **BSTTW** has several different funds that you can donate to. The **BSTTW** general fund, the **Bishop Peter Nguyen Van Nho World Wide Burned Children's Fund**, the **"Dwight Lunkley Racing To Victory" Fund**, **USA & Asian Burn Camp funds**, **BSTTW Healing Weekend**

## **BSTTW COMMUNITY NEWS**

### ***Fund, The Viet Nam Fund and the World Burn Congress Fund.***

Your donations will help **BSTTW** to do what is needed to help a burn survivor, family members rebuild their lives. It will also be used for public awareness on fire safety and how the community can help a burn survivor reenter their community.

**BSTTW** also offers people that donate \$25.00 or higher to a free copy of the **BSTTW Music CD**. To learn more about this you should go to [www.burnsurvivorsttw.org/donations/donatecd.html](http://www.burnsurvivorsttw.org/donations/donatecd.html) or [www.burnsurvivorsttw.org/donations/donations.html](http://www.burnsurvivorsttw.org/donations/donations.html)

Remember your donations can be money, clothes, a used bicycle etc.. All will help burn survivors and their family. Many families loose their homes and property. Please personally think about and talk to your family and friends about donating to **BSTTW**.

#### **MAKE DONATIONS PAYABLE TO & MAIL TO:**

Burn Survivors Throughout The World, Inc.  
16193 Lone Star Ranch Drive #102  
Conroe, Texas 77302

#### **DONATE ON LINE**

To learn more about donating on line go to: [www.burnsurvivorsttw.org/donations/donations.html](http://www.burnsurvivorsttw.org/donations/donations.html)

If you have any questions call us at 936-647-2256, toll free at 866-712-6164 or by email at: [donations@burnsurvivorsttw.org](mailto:donations@burnsurvivorsttw.org)

#### **VOLUNTEERING YOUR TIME**

There are many children, adults and families around the world that need support and other help. You do not have to be a burn survivor or family member to become a **BSTTW Volunteer**. All you need to do is become a **BSTTW Member** and then apply to become a **BSTTW Volunteer**. If you are a burn survivor or family member, in order to become a **BSTTW Member**, fill out the **BSTTW Membership & Profile Registration E-Form** at:

[www.burnsurvivorsttw.org/membership/memform.html](http://www.burnsurvivorsttw.org/membership/memform.html),

Next fill out the **BSTTW Volunteer E-Form** at:  
[www.burnsurvivorsttw.org/volunteer/volunteer.html](http://www.burnsurvivorsttw.org/volunteer/volunteer.html)

If you are not a burn survivor or family member you can skip the **BSTTW Membership & Profile Registration E-Form** and go directly to the **BSTTW Volunteer E-Form**.

By volunteering with **BSTTW**, you will be taking part in rebuilding lives and helping burn survivors reenter their community.

If you have any questions, you should first review the **BSTTW Volunteer E-Form**, after that if your questions have not been answered, you can contact **BSTTW** by email at [volunteers@burnsurvivorsttw.org](mailto:volunteers@burnsurvivorsttw.org), and by telephone at 936-647-2256 or toll free at 866-712-6164.

### **PURCHASES**

**BSTTW** has an online store where you can purchase Skin Care Products, Books and Video Tapes. To learn more go to:  
[www.burnsurvivorsttw.org/sales/sales.html](http://www.burnsurvivorsttw.org/sales/sales.html)

**BSTTW** also offers a free copy of the **BSTTW Music CD** to people who donate \$25.00 or higher to **BSTTW**. To learn more about this you should go to

[www.burnsurvivorsttw.org/donations/donatecd.html](http://www.burnsurvivorsttw.org/donations/donatecd.html)  
or

[www.burnsurvivorsttw.org/donations/donations.html](http://www.burnsurvivorsttw.org/donations/donations.html)

### **BSTTW ADDRESS & PHONE NUMBERS:**

Burn Survivors Throughout The World, Inc.  
16193 Lone Star Ranch Drive #102  
Conroe, Texas 77302  
(936) 647-2256  
Toll Free: 866-712-6164  
Fax: (936) 570-1179

Feel free to contact **BSTTW** if you have any questions and/or comments by using the **BSTTW Comment & Question E-Form** at:  
[www.burnsurvivorsttw.org/eforms/emailform.html](http://www.burnsurvivorsttw.org/eforms/emailform.html)